

# ANNUAL REPORT (2017)



**TRIBHUVAN UNIVERSITY**  
**Prithvi Narayan Campus**  
**Bagar, Pokhara**

*Submitted to*  
**University Grants Commission**  
**Sanothimi, Bhaktapur**

**29 December 2017**

# **CONTENTS**

1. Introduction/3
2. Administrative Services/3
3. Academic Achievement/5
4. Research Activities/8
5. Journal Publications/10
6. Human Resource Management/12
7. Student Flow/14
8. Financial Management/15
9. Conclusion/16

# **ANNUAL REPORT (2016-17)**

## **1. INTRODUCTION**

With over 50 years of its history, Prithvi Narayan Campus is one of the oldest and largest campuses of Tribhuvan University and is striving for finding solutions to challenges and preparing students for leadership in the 21<sup>st</sup> century.

The campus was founded on 1 September 1960 (17 Bhadra 2017 BS) in the western region, which was initially run by the local community and named “Prithvi Narayan Inter College”, starting with 13 students and 2 teachers for intermediate education. The beginning classes were conducted in Kanya School, Nadipur Patan and moved to Bhimkali Patan in Bagar after two years.

The college resumed its first batch on 20 August 1963 with the Bachelor of Arts (BA) study, which was accredited from Tribhuvan University. The college was formally incorporated with Tribhuvan University on 1 Shrawan 2030 BS as one of its constituent campuses, changing its status from ‘college to ‘campus’. The campus started its master’s degree in Economics in 2035 BS. It was followed by the MA in Geography the following year in 2036 BS.

The campus now has 4 faculties and 1 institute: Faculty of Humanities & Social Sciences, Faculty of Management and Faculty of Law, Faculty of Education, and Institute of Science & Technology. It has 31 departments and runs 32 programmes and offers about 500 courses. There are 490 faculty and 100 non-teaching staff who have involved in providing higher education to more than 9410 students in various academic programmes.

The campus has been the major centre for higher education in the western region and has spread over 36 hectares (over 721 ropanis) along on the banks of the Seti Gandaki River.

## **2. ADMINISTRATIVE SERVICES**

Prithvi Narayan Campus is governed by the management committee as the supreme body of the institution. The committee is the governing board and policy-making body for the campus that plays a vital role in the campus governance. It comprises of up to 22 members. Currently, the committee consists of the following personalities who represent various walks of life:

<b>SN</b>	<b>Name and Position</b>
1	Prof. Dr. Chandra Bahadur Thapa, Campus Chief
2	Prof. Tara Raj Khanal, Asst. Campus Chief
3	Basanta Raj Parajuli, Asst. Campus Chief
4	Nanda Lal Adhikari, Asst. Campus Chief

5	Mahendra Ale, Asst. Campus Chief
6	Dr. Bir Bahadur Karki, Asst. Campus Chief
7	Hom Nath Poudel, Asst. Campus Chief
8	Dr. Uma Nath Baral, Dept Head
9	Indra Prasad Sharma, Dept Head
10	Huta Raj Sharma, Dept Head
11	Prof. Dr. Shova Kant Lamichhane, Faculty
12	Kamal Raj Poudel, Faculty
13	Sharada Parajuli, Chair of Ward No. 1
14	Som Nath Adhikari Pyasi, Guardian
15	Rishi Sapkota, Guardian
16	Raghu Nath Adhikari, Donator
17	Komal Nath Baraal, Donator
18	Prof. Dr. Bed Nath Sharma, Chair of TUTA, PNC Unit
19	Nava Raj Bastola, Chair of TUEA, PNC Unit
20	Representative of Free Student's Union
21	Prem Lal Baral, Chief Administrator
22	Chiranjivee Prasad Baral, Financial Controller

### **Executive Committee**

The executive committee is under the management committee and is formed under the chairmanship of the Campus Chief. It formulates policies and processes for the overall operational management of the campus.

### **Academic Officials**

Both everyday academic and non-academic affairs of the campus are looked after by the following top officials. They are also responsible for overall supervision, monitoring and evaluation of students, and teaching and non-teaching staff.

SN	Name	From	To
1	Prof. Tara Raj Khanal (Asst. Campus Chief, Hum. & Soc. Sc.)	2073/07/09	2075/07/08
2	Basanta Prasad Parajuli (Asst. Campus Chief, Edu & Law)	2074/02/29	2076/02/28

3	Chola Kant Ojha (Program Coordinator, Education, Evening)	2073/09/09	2075/09/08
4	Nanda Lal Adhikari (Asst. Campus Chief, Sc. & Tech)	2072/09/05	2074/09/04
5	Mahendra Ale (Asst. Campus Chief, Hum & Soc.Sc, Day)	2074/02/29	2076/02/28
6	Dr. Bir Bahadur Karki (Asst. Campus Chief, Management)	2073/06/04	2075/06/03
7	Hom Nath Poudel (Asst. Campus Chief, Education, Day)	2074/05/14	2076/05/13
8	Upendra Poudel (Asst. Campus Chief, Master's Programs)	2074/06/25	2076/06/24
9	Netra Narayan Poudel (Chair, Student's Welfare)	2074/03/17	2076/03/16

There are many senior administrators who are academics who have advanced degrees and no longer teach or conduct research actively. The administrative offices are essential to support the mission and operations of the campus, dealing with various working sectors of the campus:

- General administration
- Financial administration
- Academic administration
- Student affairs

The following officials have the key administrative responsibilities (and thus administrative units) of the campus. They help accomplish all services whether they are academic or non-academic:

- 1) Prem Lal Baral  
Deputy Administrator (Employee Administration)
- 2) Chiranjivee Prasad Thapaliya  
Deputy Finance Controller (Finance Division)
- 3) Kedar Nath Adhikari  
Deputy Administrator (General Administration)
- 4) Kishor Subedi  
Librarian (Library Administration)

### **3. ACADEMIC ACHIEVEMENT**

Prithvi Narayan Campus has 4 Faculties and 1 Institute. Each offers excellent teaching learning and research environments in a wide-ranging variety of fields. Its academic vigor offers excellence across disciplines and around the country. We are recognized as a leader in higher education due to the outstanding quality of our departments that offer over 32 programmes and over 500 courses.

#### **Faculty of Humanities & Social Sciences**

The Faculty of Humanities & Social Sciences at PN Campus is a renowned centre of excellence, where students benefit from the multi-disciplinary breadth of teaching in areas such as English, History, Culture, Nepali, Geography, Economics, Sociology, and Anthropology along with more than other modern subjects.

- No. of Faculty = 160
- No. of Students = 1415

Each of the departments has major research strengths in its own discipline. Some 160 faculty members contribute to the teaching activities across the faculty and their research activities are complemented by those of over 300 research students. The departments also play a major role in the campus's growing network of interdisciplinary practices. This faculty has the following departments:

- Department of English
- Department of Nepali
- Department of Economics
- Department of Geography
- Department of History & Culture
- Department of Political Science
- Department of Sociology & Rural Development
- Department of Anthropology
- Department of Population Studies

### **Faculty of Management**

The Faculty of Management at Prithvi Narayan Campus aims to provide higher education to students for academic and professional pursuits in business, industry, and government. It produces dynamic and innovative entrepreneurs capable of promoting business and industry for the scio-economic development of Nepal.

Management (also called Commerce) classes started in September 1969 with eleven students in the first year of Intermediate in Commerce program. Undergraduate classes offering a Bachelors degree in commerce began in 1976 with 25 students. In 1990, the campus started offering Master's degree in Commerce.

- No. of Faculty = 71
- No. of Students = 4228

Currently, the faculty has the following 6 departments that handle different specialized subjects:

- Department of General Management
- Department of Sectoral Management
- Department of Account
- Department of Finance
- Department of Marketing
- Department of Research Management

### **Faculty of Education**

The Faculty of Education at Prithvi Narayan Campus is the leading institution in producing dynamic and innovative future teachers, and education educators/trainers in the western region of Nepal. The faculty has good relationships with educational institutions such as schools and colleges in the region, and has been a leader in educational developments over the years.

- No. of Faculty = 89
- No. of Students = 2308

Our faculty members and students journey together on their search for academic pursuit to better understand education, bringing a meaningful change to their academic practice. The faculty has the following departments under its operations:

- Department of English Education
- Department of Nepali Education
- Department of Education
- Department of Curriculum & EPM
- Department of Health, Physical & Population Education
- Department of Social Studies (Economics, Geography, History & Political Science)
- Department of Science & Environmental Education
- Department of Teaching Practice

### **Faculty of Law**

The Faculty of Law at Prithvi Narayan Campus is the one and only leading law higher education institution in the western region of Nepal. The faculty is committed to the rigorous, multi-disciplinary and innovative study of law that has a particular attention to the global context.

- No. of Faculty = 9
- No. of Students = 198

The faculty's research activities at its departments make a vital contribution to the quality of our teaching and the academic pursuit of our students. The faculty also focuses on the practical aspect of legal policy of the country. Departments

- Department of Criminal & International Law
- Department of Civil & Constitutional Law

### **Institute of Science & Technology**

The Institute of Science & Technology at Prithvi Narayan Campus intends to promote the quality of its departments in terms of effective teaching learning and research activities. The institute encompasses the logical, experimental and mathematical study of our sciences, combining both theoretical and practical aspects and directly benefitting our students from access to well-furnished laboratory facilities. The institute offers an array of 4-Year B.Sc and 2-Year M.Sc degrees in emerging and more dynamic academic areas.

- No. of Faculty = 161
- No. of Students = 1199

The faculty provides a base for research activities throughout the course that facilitates in-depth and interdisciplinary approach through interconnected teaching and research activities. The faculty has the following departments that have strong collaboration among the experts within the faculty.

- Department of Physics
- Department of Chemistry
- Department of Botany & Microbiology
- Department of Zoology
- Department of Statistics
- Department of Mathematics

## **Courses Offered**

Academic departments at Prithvi Narayan Campus produce higher degree graduates, leading the way in many fields of study. The students can check with the following courses on offer and download the latest degrees and their syllabi prescribed by the Curriculum Development Centre of Tribhuvan University.

### **a) Bachelor's Level**

- Bachelor of Arts (BA)
- Bachelor of Business Studies (BBS)
- Bachelor of Business Administration (BBA)
- Bachelor of Public Administration (BPA)
- Bachelor of Education (B.Ed - 4 Years)
- 1-Year Bachelor of Education (B.Ed)
- Bachelor of Laws (LL.B)
- Bachelor of Arts in Law (BA.LL.B)
- Bachelor of Science (B.Sc – 4 Years)
- Bachelor of Science in CSIT (B.Sc. CSIT)
- Bachelor of Science in Geology

### **b) Master's Level**

- Master of Arts (MA) in English
- Master of Arts (MA) in Nepali
- Master of Arts (MA) in Economics
- Master of Arts (MA) in Geography
- Master of Arts (MA) in Political Science
- Master of Arts (MA) in History
- Master of Arts (MA) in Sociology
- Master of Arts (MA) in Anthropology
- Master of Arts (MA) in Population Studies
- Master of Business Studies (MBS)
- Master of Science (M.Sc) in Physics
- Master of Science (M.Sc) in Mathematics
- Master of Education (M.Ed) in English
- Master of Education (M.Ed) in Nepali
- Master of Education (M.Ed) in EPM
- Master of Education (M.Ed) in Curriculum
- Master of Education (M.Ed) in Economics
- Master of Education (M.Ed) in Health
- Master of Education (M.Ed) in Mathematics
- Master of Public Administration (MPA)

## **4. RESEARCH ACTIVITIES**

Over the past few years, Prithvi Narayan Campus has become a major research institution that engages its faculty members and students in research activities. The faculty members and students (here students who involve in research activities through project works and thesis



writing) in the campus are advancing the frontiers of science, management, education, law, humanities and social sciences.

Both young faculty members and students (Bachelor's and Master's Level) at the campus are encouraged to take advantage of a wide range of research opportunities. Each department at the campus provides support to students engaged in Master's Level research and provide orientations on how to conduct research and write reports. The students have the opportunity to work alongside experienced faculty members in a variety of settings. Together, they work to find solutions to society's most pressing problems.

The research committee has a separate well-furnished office and a seminar hall in the Science Laboratory Building. It possesses an office at the corner of the hall with six computers, and a printer (multi-functional). This committee was established as a centre to serve the faculty members and students to enhance their academic and research capabilities and to provide resources for conducting research activities. In addition, the committee coordinates, supervises and evaluates research activities of the faculty members and students.

The committee also publishes "Prithvi," which is a multi-disciplinary research journal regularly and incorporates the research papers produced through research projects conducted by research grantees. The current research committee comprises the following members:

1. Chairperson - Prof. Dr. Chandra Bahadur Thapa
2. Member - Prof. Dr. Vikas Kumar KC
3. Member - Prof. Dr. Gyan Bahadur Karki
4. Member - Prof. Dr. Bishnu Prasad Poudel
5. Member - Prof. Dr. Puspa Raj Sharma
6. Member - Prof. Dr. Akkal Dev Mishra
7. Member - Member - Dr. Saroj Koirala
8. Member – Chiranjivee Thapaliya
9. Member Secretary - Prof. Dr. Lekh Nath Bhattarai

## **5. JOURNAL PUBLICATIONS**

All departments at Prithvi Narayan Campus have engaged in different publication activities such as journals, magazines, newsletters, etc. The research journals are published on the biannual and annual basis, and many of them are published both in print and online. In line with its commitment to economic, social and environmental sustainability, the campus is minimising the content of its print publications, and enhancing its website by providing PDF versions online of its printed publications.

- 1) Demographic Forum  
Published by Department of Population Studies
- 2) Economic Literature  
Published by Department of Economics
- 3) Himalayan Scientific Journal  
Published by Institute of Science & Technology
- 4) Himalayan Journal of Sociology and Anthropology  
Published by Department of Sociology and Anthropology

- 5) Historia  
Published by Department of History & Culture
- 1) HPE Forum  
Published by Department of Health/ Physical  
Education
- 2) Journal of Nepalese Business Studies  
Published by Faculty of Management
- 3) Journal of Alpine Chemistry  
Published by Department of Chemistry
- 9) Journal of Political Science  
Published by Department of Political Science
- 10) Pokhara Law Review  
Published by Faculty of Law
- 11) Pragyamanch  
Published by TU Teachers Association, PN Campus  
Unit
- 14) Pragyik Prabaha  
Published by Faculty of Law
- 15) Prithvi  
Published by Research Committee, PN Campus
- 16) पृथ्वी वाङ्मय  
Published by Department of Nepali
- 17) पृथ्वी दर्पण  
Published by Department of Nepali Education
- 18) Shikshya Sandesh  
Published by Faculty of Education
- 19) The Himalayan Geographers  
Published by Department of Geography
- 20) The Himalayan Physics  
Published by Department of Physics
- 21) The Himalayan Physics  
Published by Department of Physics

22) The Outlook: Journal of English Studies  
Published by Department of English

23) यात्रा  
Published by Department of Nepali Education

24) Yeti: Journal of Mathematics  
Published by Department of Mathematics

26) Zoo-Journal  
Published by Department of Zoology

Not only the faculty members, exceptionally in the Institute of Science & Technology and Department of English Education, the students also publish research journals that feature scholarly articles by faculty members and students themselves.

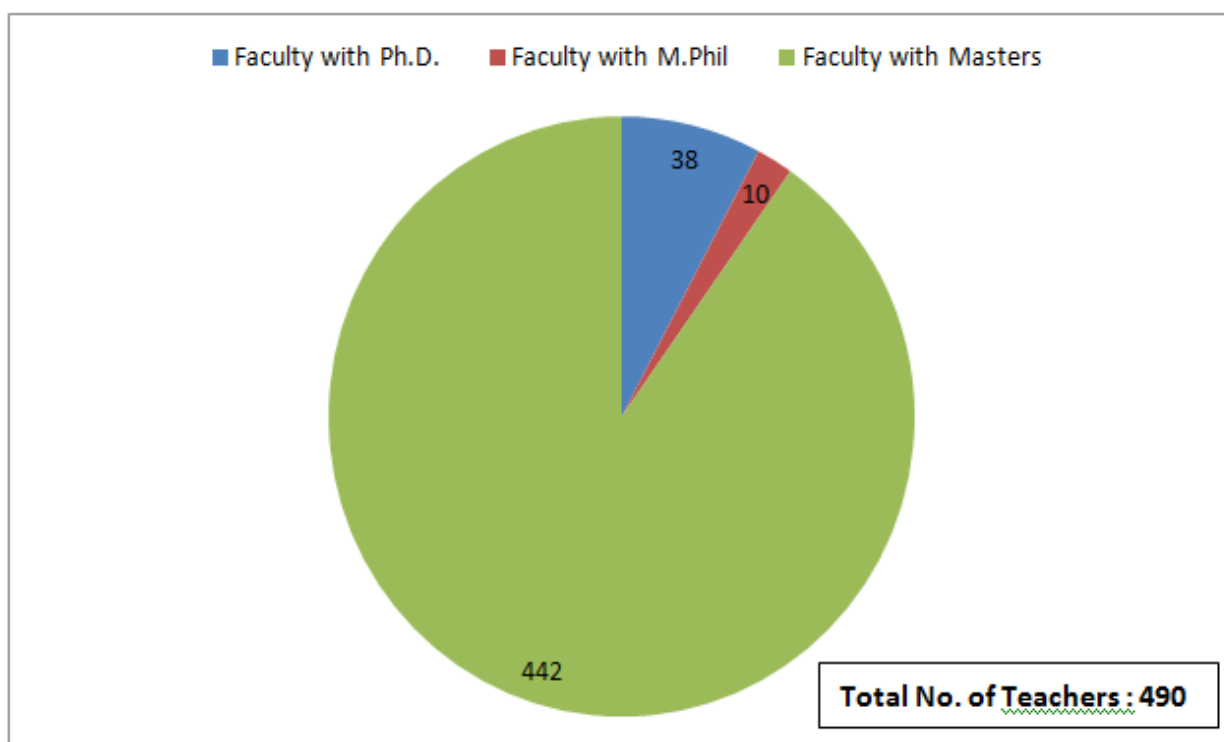
- 1) आम सञ्चार र पत्रकारिता  
Published by BA Level Students  
Mass Media and Journalism Group
- 2) English Language Teaching VIEWS  
Published by English Education Student's Group, M.Ed II, Faculty of Education
- 3) Creative Science  
Published by Creative Science Association, Institute of Science & Technology
- 4) Resolution  
Published by M.Sc., Physics, Faculty of Science & Technology

## **6. HUMAN RESOURCE MANAGEMENT**

Prithvi Narayan Campus places a high priority on creating an environment that enables teaching and non-teaching staff to perform their best job. The campus appreciates the contributions of all its faculty members in making the campus a top public higher education institution.

- Faculty with Ph.D. = 38
- Faculty with M.Phil.= 10
- Faculty with Master's Degree = 442

The faculty members are driven by cross-disciplinary collaboration and form a community on campus that produces ideas that enrich human life. They do their best innovative work as they also prepare the next generation of scholars. The faculty members are categorized in the order of faculties, departments and positions of the faculty members.



#### Faculty/Institute-Wise Faculty Members

S.No.	Faculty/ Institute	No. of Faculty Members
1	Faculty of Humanities & Social Sciences	160
2	Faculty of Management	71
3	Faculty of Education	89
4	Faculty of Law	9
5	Institute of Science & Technology	161
	<b>Grand Total</b>	<b>490</b>

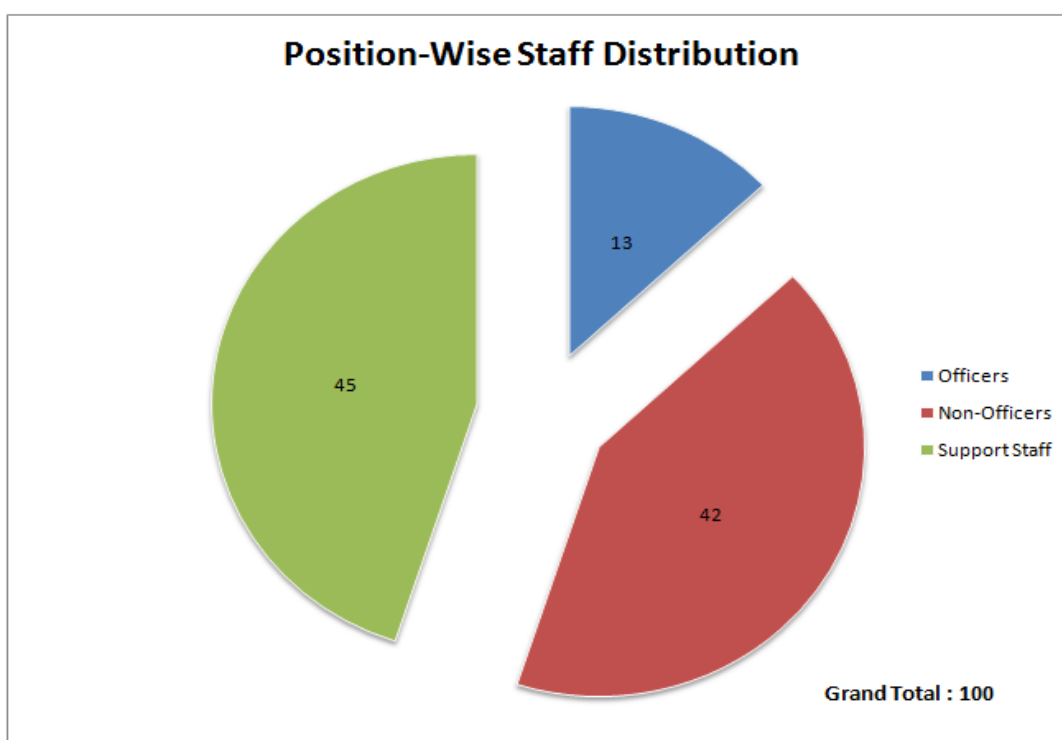
#### Department-Wise Faculty Members

S.No.	Department	No. of Faculty Members
<b>Faculty of Humanities &amp; Social Sciences</b>		
1	Department of English	30
2	Department of Nepali	32
3	Department of Economics	24
4	Department of Geography	15
5	Department of History & Culture	15
6	Department of Political Science	11
7	Department of Sociology & Rural Development	15
8	Department of Anthropology	7
9	Department of Population Studies	11
<b>Faculty of Management</b>		
1	Department of General Management	24
2	Department of Sectoral Management	6
3	Department of Account	15
4	Department of Finance	16

5	Department of Marketing	10
6	Department of Research Management	(5)
<b>Faculty of Education</b>		
1	Department of English Education	16
2	Department of Nepali Education	16
3	Department of Education	19
4	Department of HPE	18
5	Department of Social Studies & Economic Education	14
6	Department of Science & Environmental Education	6
7	Department of Teaching Practice	(1)
<b>Faculty of Law</b>		
1	Department of Criminal & International Law	5
2	Department of Civil & Constitutional Law	4
<b>Institute of Science &amp; Technology</b>		
1	Department of Physics	36
2	Department of Chemistry	31
3	Department of Botany & Microbiology	14
4	Department of Zoology	15
5	Department of Statistics	25
6	Department of Mathematics	40
<b>Grand Total</b>		<b>490</b>

### Non-Teaching Staff

At Prithvi Narayan Campus, non-teaching staff accomplish the administrative responsibilities and are dedicated to student support teaching learning, research and public service. They come from different academic and cultural backgrounds. Together, they work with the facilities of the campus and make all the work of the campus a possibility. The following chart shows the list of non-teaching staff of the campus, which is presented by position.



## 7. STUDENT FLOW

Much of the student experience at Prithvi Narayan Campus is defined by its size: the campus is both geographically dispersed and immense in its resources. For incoming students, success while at the campus often depends on identifying personal pathways through their undergraduate experience. Toward that end, the campus must ensure that students have early and ongoing interaction with faculty, as well as structured access to opportunities for engaging in research and professional development. This defining characteristic should be protected and nourished. Finally, the campus will enable students to take a leading role in transforming their own experience through opportunities for fostering friendships, personal and intellectual growth, civility, and community pride.

### Year-Wise Enrolment 2017

<b>Programme</b>	<b>Total</b>
Bachelor	7241
Master	2239
<b>Grand Total</b>	<b>9480</b>

### Programme-Wise Pass Out Students 2016

<b>Programme</b>	<b>2016</b>
Bachelor	428
Master	297
<b>Total</b>	<b>725</b>

### Faculty/Institute-Wise Enrolment 2017

<b>Faculties/ Institute</b>	<b>Total</b>
Humanities & Social Sciences	1422
Management	4531
Education	1954
Law	364
Science & Technology	1209
<b>Grand Total</b>	<b>9480</b>

### Faculty/Institute-Wise Pass Out Students 2016

<b>Faculties/ Institute</b>	<b>Bachelor Level</b>	<b>Master Level</b>	<b>Total</b>
Humanities & Social Sciences	51	157	
Management	205	67	
Education	93	73	
Law	23	-	
Science & Technology	113	-	
<b>Total</b>	<b>485</b>	<b>297</b>	<b>782</b>

## 8. FINANCIAL MANAGEMENT

In order to help create a good environment for its students and faculty, Prithvi Narayan Campus has to address its financial position. At a time of steady decline in the government revenues, the campus has to augment revenues by expanding nontraditional academic offerings, developing innovative fundraising paradigms, and rethinking delivery of academic, student, and auxiliary services. Similarly, the campus has to recover resources internally that are associated with inefficient, ineffective, or outmoded programs and redeploy these resources toward our new strategic goals.

The cost of higher education in the campus for the fiscal year 2016/17 is as follows:

Total Amount of budget: **Rs. 20,72,23,000.00**  
Amount of development budget: **Rs. 5,00,000.00**  
Capital Expenditure: **Rs. 1,15,00,000.00**

### Income

The main source of financing is its own internal investment and certain amount of budget received from the university, which is presented below:

Owners Investment	University
Rs. 6,11,88,000.00	Rs. 14,55,35,000.00

### Expenses

This fiscal year's income expenditure of the institution is given below:

S.N.	Fiscal Year	Total Income	Total Expenditure
3	2016/17	<b>Rs. 5,04,55,460.90</b>	<b>Rs. 29,35,19,530.17</b>

## 9. CONCLUSION

Teaching learning and research at Prithvi Narayan Campus are organized through the faculties, institutes, departments and programmes. Recently, there are 504 teaching staff and 117 non-teaching staff who have involved in providing higher education to more than 8007 students. More than 500 Bachelor's and Master's courses are offered that formed curriculum of remarkable breadth and depth. The campus is, thus, rich in terms of a number of students studying in the campus, infrastructure available in creating a good teaching learning and research activities, and a number of faculty and non-teaching staff working to maintain the quality of higher education offered by the campus.

The campus has also formulated a five-year strategic education plan to achieve the mission and vision of the campus. The campus is a student-oriented place with a friendly and self-motivated community of advanced students. Most importantly, there is a mix of students from different cultures and social backgrounds around the western region that makes the campus a vibrant place to study.